

PLANT SCHEDULE

TREES				
SYM	SPECIES	COMMON NAME	QTY	POT SIZE SPACE
ANC	Angophora costata	Smooth-Barked Apple	1 100L	A/S
ANF	Angophora floribunda	Rough-Barked Apple	6 75L	A/S
ELR	Elaeocarpus reticulatus	Blueberry Ash	12 100L	A/S
EUPA	Eucalyptus particulata	Grey Ironbark	2 25L	A/S
EUPH	Eucalyptus pululata	Cheese Tree	2 25L	A/S
GLF	Gleditsia ferrandii		1 100L	A/S
MEA	Meiwa azederach		1 100L	A/S
SYG	Syzygium glomerata	Timberline	8 75L	A/S

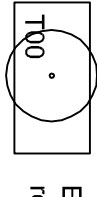
33


SHRUBS & GROUNDCOVERS


SYM	SPECIES	COMMON NAME	QTY	POT SIZE SPACE
BAE	Banksia ericifolia	Heath Banksia	60 200mm	A/S
BASP	Banksia spinulosa	Harpin Banksia	34 200mm	A/S
DIC	Dianella caerulea	Flax Lily	2 188 140mm	0.30
GRMT	Grevillea 'Mt Tamborine'	Woolly Grevillea	287 140mm	0.40
HAWMH	Hardibegonia violacea 'Mini Hair'		615 140mm	0.30
ISN	Isotria medeolae		175 tube	0.25
KUA	Kunzea ambigua	Tickbush	23 tube	A/S
LON	Lomandra Nyctalis	Blue Wattlebird	145 140mm	0.40
LONM	Lomandra 'Tangle'	Frankia	1422 140mm	0.30
LCL	Lomandra longifolia		1070 140mm	0.40
WYD	Wyoparum parvifolium		323 75L	A/S
XKASP	Xanthorrhoea sp.	Grass Tree	20 75L	A/S


6363

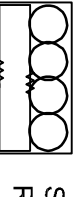
LEGEND


- 

Existing trees to be retained & protected
- 

Existing trees to be removed
- 

Proposed trees
- 

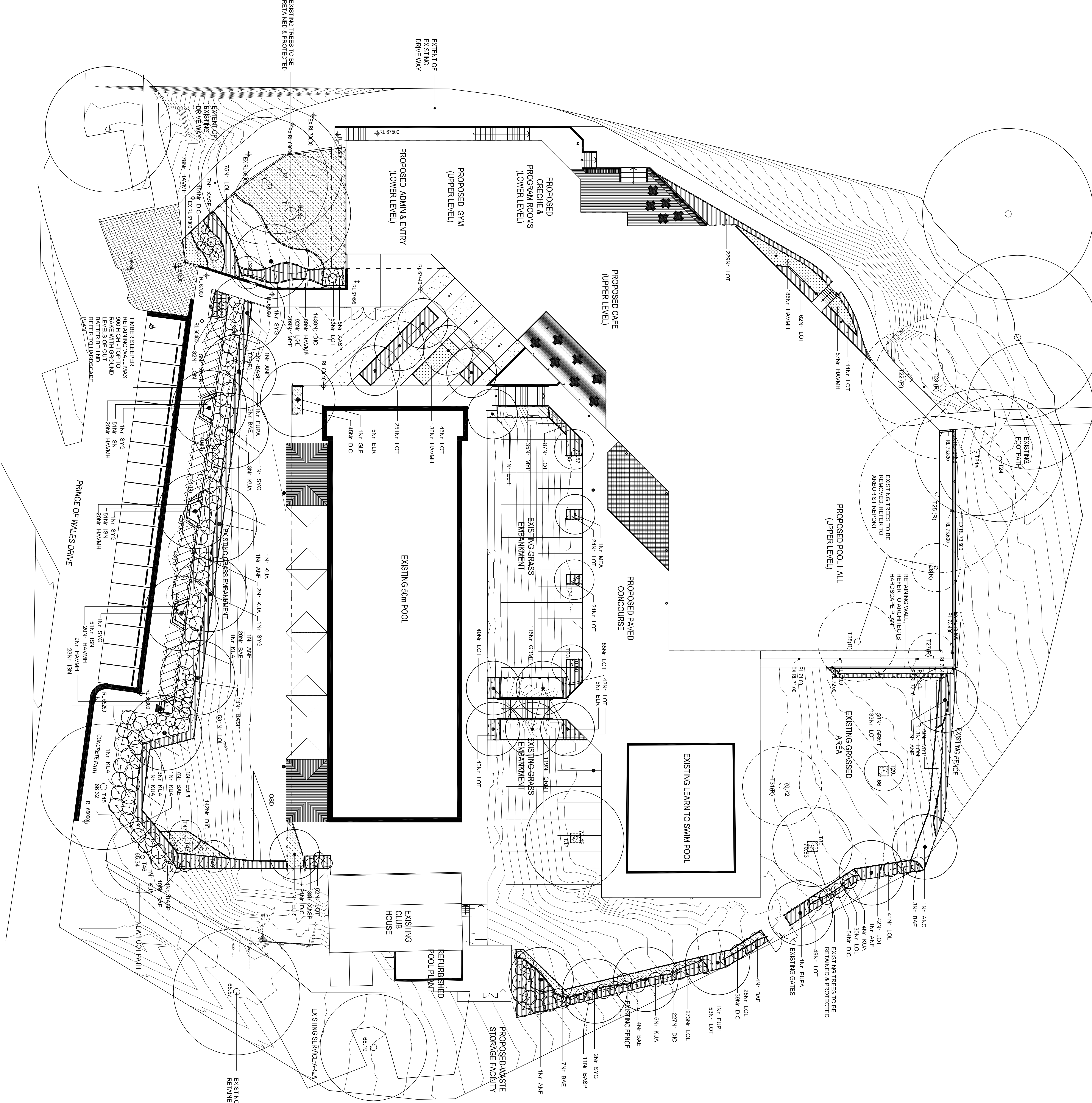
Refer to plant schedule
- 

Shrubs & groundcovers
- 

Timber edge

NOTES

1. GENERAL
Read drawings in conjunction with the specification and details. Refer to drawings for precise information regarding paving, retained levels, roadworks, walls, fences & drainage details.
2. SERVICES
Before any service work is commenced, Landscape Contractors to ensure that all services are located and marked prior to any excavation or construction. If a service has not been marked, then it is to be assumed that it is present and must be protected from any damage during construction.
3. WEED ERADICATION
Eradicate all weeds from planting areas prior to planting operations. Weeds must be removed from the site and disposed of in accordance with local council's requirements and rules. Two weeks prior to the commencement of planting, the site must be inspected for weeds. Remove all weed material from site.
4. EXISTING TREES TO BE RETAINED
Retain and protect all existing trees and vegetation on the site unless otherwise stated. All trees to be retained must be protected by a tree protection system. A tree protection system must be installed in the vicinity of existing trees. Current must not be matted in the area of the root zone. Do not store or use of root zone. Do not place soil from excavations against tree trunks, even for short periods. Prevent wind-blown materials such as cement from falling onto and past trees.
5. SETOUT
The existing level must not be raised or lowered around trees. Any changes to the level must be approved by the Landscape Architect or Arborist.
6. SETOUT
All setout to be approved by Landscape Architect prior to construction. All setout must be approved by the Landscape Architect or Arborist.
7. SOIL PREPARATION
Soil to be prepared by Landscape Architects and Contractors. All setout to be approved by the Landscape Architect or Arborist. All setout to be approved by the Landscape Architect or Arborist. All setout to be approved by the Landscape Architect or Arborist.
8. IRRIGATION
All irrigation systems must be installed to all areas. All irrigation systems must be installed to all areas. All irrigation systems must be installed to all areas.
9. MAINTENANCE
Refer to Engineers' drawings for drainage details. Notify Landscape Contractors of any drainage issues. Notify Landscape Contractors of any drainage issues. Notify Landscape Contractors of any drainage issues.



STURT ASSOCIATES

LANDSCAPE D.A. PLAN

DA-0901-02

1:200 @ B1

24.02.11

1:200 @ B1

24.02.11

1:200 @ B1

24.02.11